

**A Summary Insurance Appraisal  
for  
Washington Public Library  
115 W. Washington, Iowa 52353  
March 24, 2011**

**Prepared by American Indian Art Appraisals  
A division of EPIC, INC.,**

**Dr. Leona M. Zastrow, PhD**

**140½ Ojo de la Vaca RD**

**Santa Fe, NM 87508**

**505-466-8581**

**[epicinc@earthlink.net](mailto:epicinc@earthlink.net)**

**[americanindianartappraising.com](http://americanindianartappraising.com)**

### Summary of Photographs

<u>Item #</u>	<u>Pages</u>	<u># of Pictures</u>
1	1 & 2	8
2	3 & 4	6
3	4 & 5 & 6	7
4	6 & 7	7
5	8 & 9	8
6	10 & 11	8
7	12 & 13 & 14	9
8	14 & 15 & 16	11
9	17 & 18	6
10	18 & 19	6
11	20 & 21	7
12	21 & 22 & 23	6
13	23 & 24	5
14	24 & 25	5
15	25 & 26	5
16	27 & 28	5
17	28 & 29	4
18	29 & 30	6
19	30 & 31	4
20	31 & 32	4
21	32 & 33 & 34	8
22	35 & 36	6
23	36 & 37	6

<b>Item #</b>	<b>Pages</b>	<b># of Pictures</b>
24	38 & 39	5
25	39	3
26	40	4
27	41	4
28	42 & 43	5
29	43 & 44	7
30	45	4
31	46 & 47	6
32	47 & 48	3
33	48 & 49	4
34	49	2
35	50 & 51 & 52	11
36	52 & 53 & 54 & 55 & 56	15
37	56 & 57	6
38	58	2
39	58 & 59	4
40	59 & 60	4
41	60 & 61	6
42	62 & 63 & 64	9
43	64 & 65	5
44	66 & 67	5
45	67 & 68	5
46	68	2
47	69	4
48	70 & 71	5
49	71 & 72 & 73	9

<b>Item #</b>	<b>Pages</b>	<b># of Pictures</b>
50	73 & 74 & 75	10
51	76 & 77 & 78	9
52	78 & 79	6
53	79 & 80	2
54	80	2
55	80 & 81	2
56	81	2
57	81 & 82	2
58	82	2
59	82 & 83	2
60	83	2
61	83 & 84	2
62	84	2
63	84 & 85	2
64	85	2
65	85 & 86	4
66	86	1
67	87 & 88	7
<b>Totals 67</b>	<b>88</b>	<b>347</b>

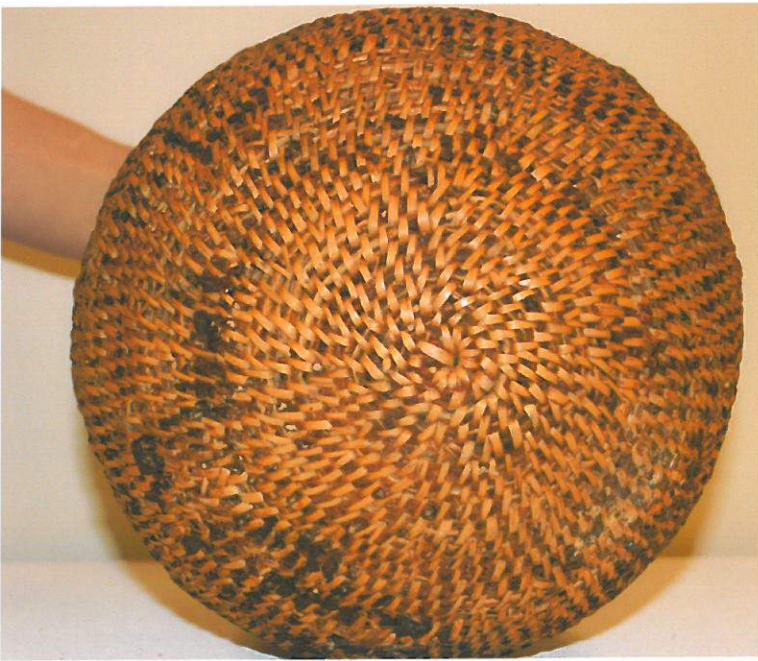


Woven water bottle coated  
on both sides with piñon green  
Paint.



Item 1- label in basket

Item 1- Navajo water basket



Item 1- bottom of the basket



Item 1- inside of the basket

3/21/11

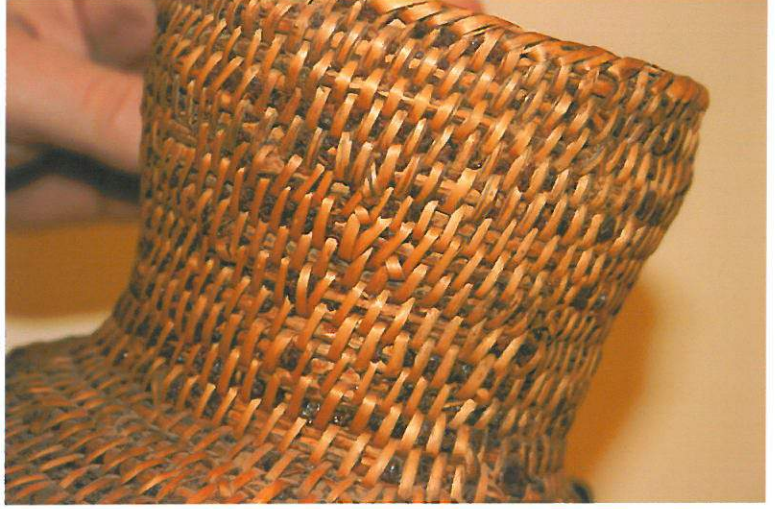
1

WPL

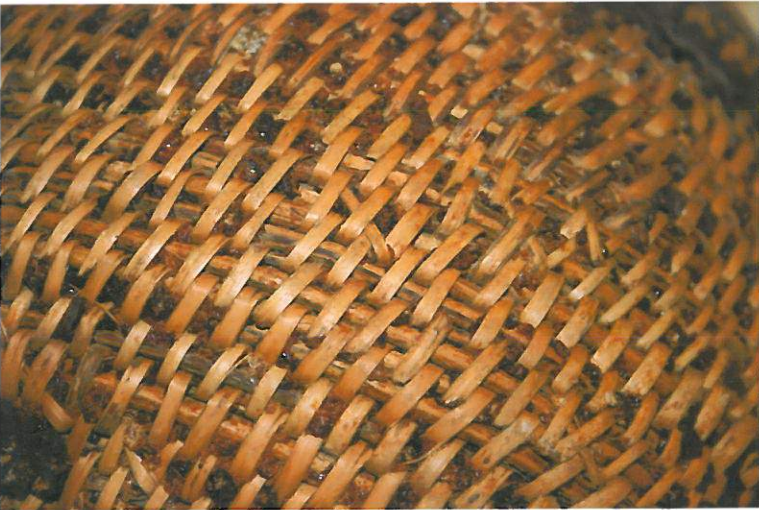




Item 1- horsehair handles



Item 1- neck of basket



Item 1- weave & materials



Item 1- pinon pitch

3/21/11

2

WFL





Item 2 - Apache basket



Item 2- back of basket



Item 2- beginning stitch



Item 2- side of basket





Item 2- rim braiding



Item 2 - designs



Item 3 - Apache basket



Item 3 - design

3/21/11

4

WPL





Item 3- final rim



Item 3- braided rim



Item 3 - back of basket



Item 3 - beginning coil

3/21/11

S

WPL





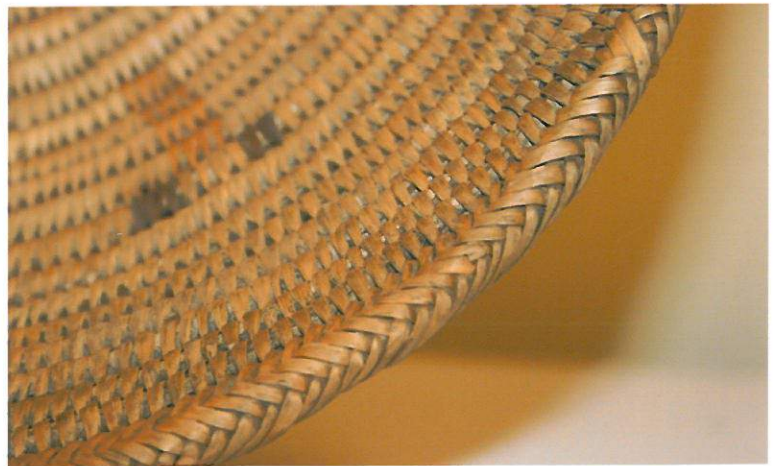
Item 3 - side design



Item 4 - Apache basket



Item 4- designs



Item 4 - closeup of designs & braided rim

3/21/11

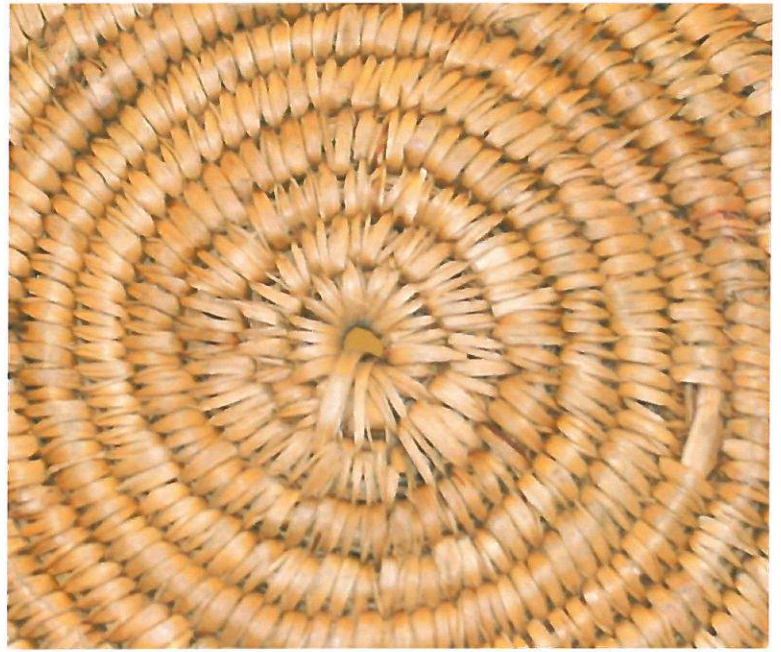
6

WPL





Item 4 - back of basket



Item 4- beginning coil



Item 4 - closeup of design



Item 4- braided edge, last coil

3/21/11

7

WPL





Item 5 - Apache basket



Item 5 - front view



Item 5 - close up of weave



Item 5- final coil wrap

3/21/11

8

WPL

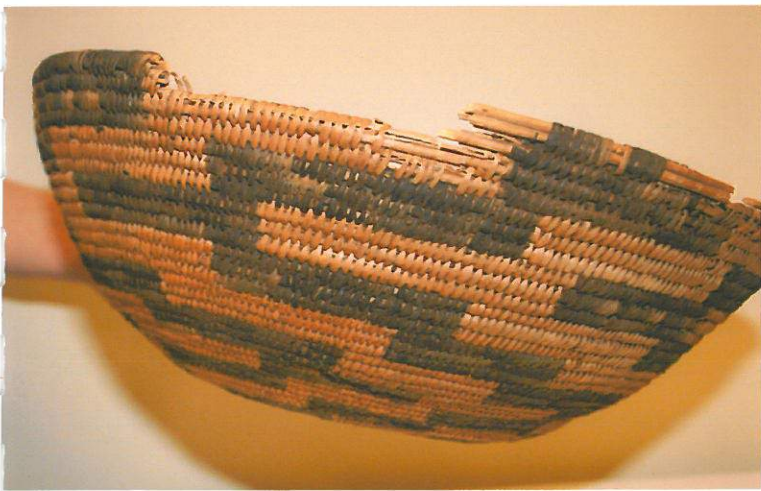




Item 5 - back of basket



Item 5 - side view



Item 5 - repair area



Item 5 - closeup of rods

3/21/11

9

WPL

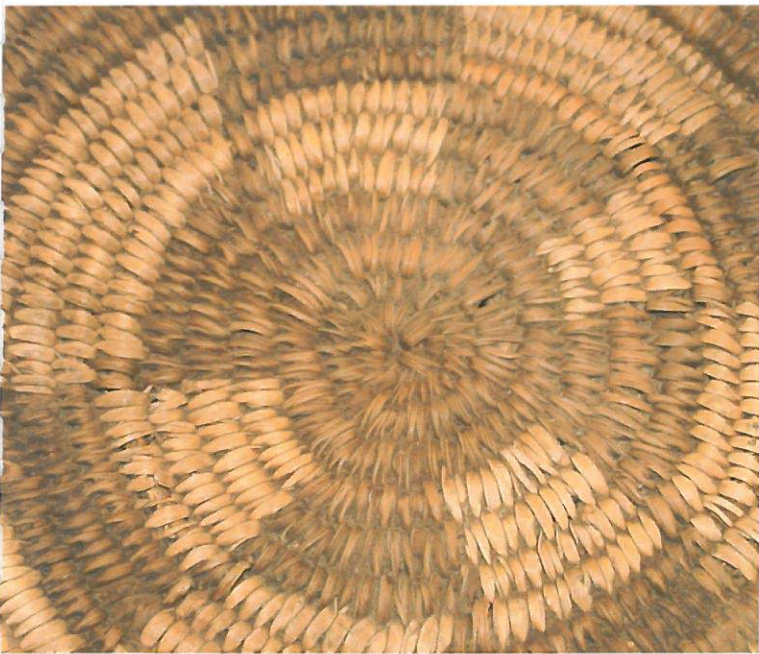




Item 6 Apache baskets



Item 6 side view



Item 6 - beginning coil



Item 6 - braided final coil

3/21/11

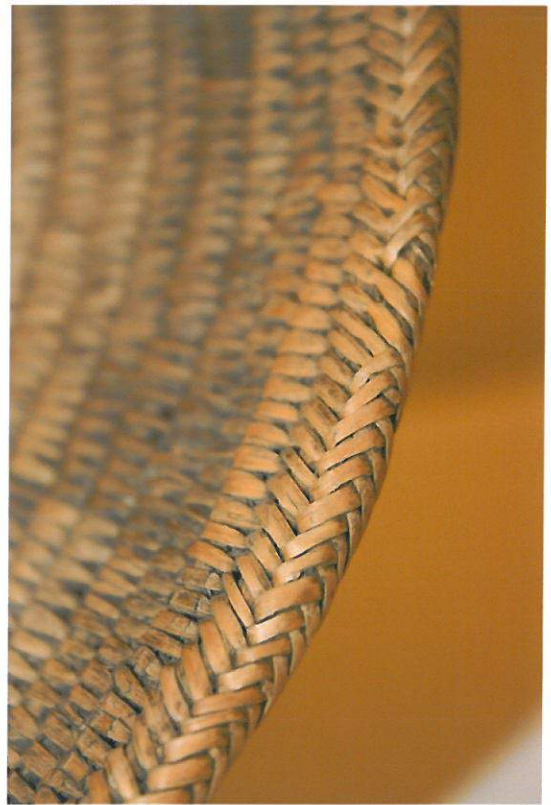
10

WPL





Item 6- rod as warp



Item 6 - closeup of braiding



Item 6 - back of basket



Item 6 exposed rods

3/21/11

11

WPL





Item 7 - Navajo basket



Item 7 - front view



Item 7 - designs



Item 7 - spirit line

3/21/11

12

WPL





Item 7 - beginning coil



Item 7 - closeup of design



Item 7 braided edge



Item 7 - back of basket

3/21/11

13

WPL





Item 7 - exposed rods



Item 8 - Hopi tray



Item 8 - side view



Item 8 center view

3/21/11

14

WPL





Item 8 - finishing coil



Item 8 - plaited weave



Item 8 - back



Item 8 - designs

3/21/11

15

WPL





Item 8 closeup



Item 8 - center starting coil



Item 8 - rods



Item 8- 3/4th view

3/21/11

16

WPL





Item 9- Katsina figure - Polacca Pochrome Jar 1880



Item 9- Katsina figure



Item 9 - close up



Item 9 - firing clouds and ware

3/21/11

17

WPL

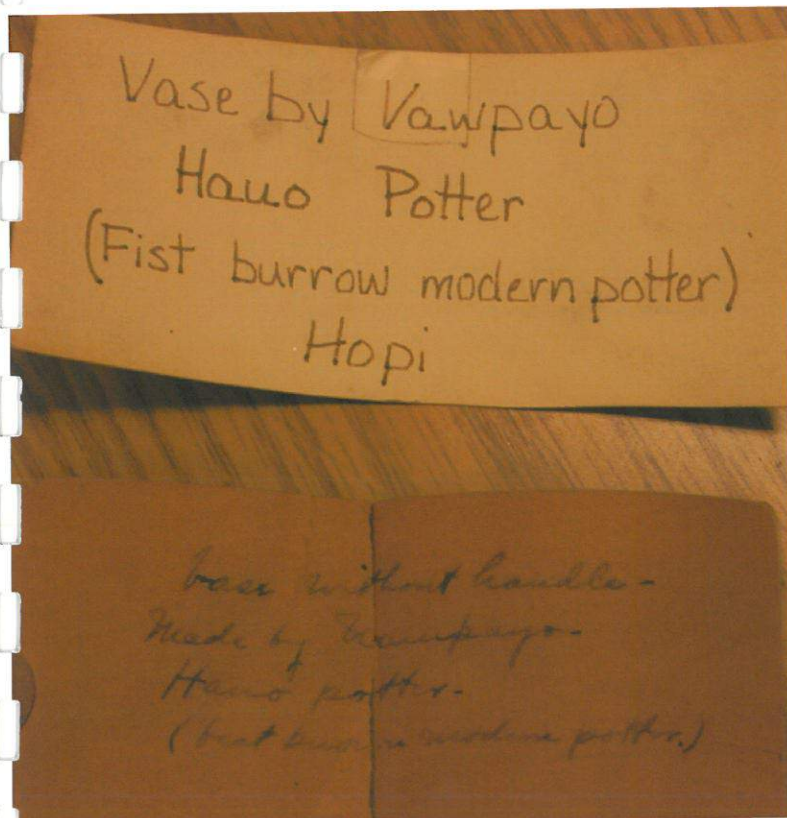




Item 9 - chipped lip



Item 9 - bottom



Item 10 paper inside of jar

3/21/11

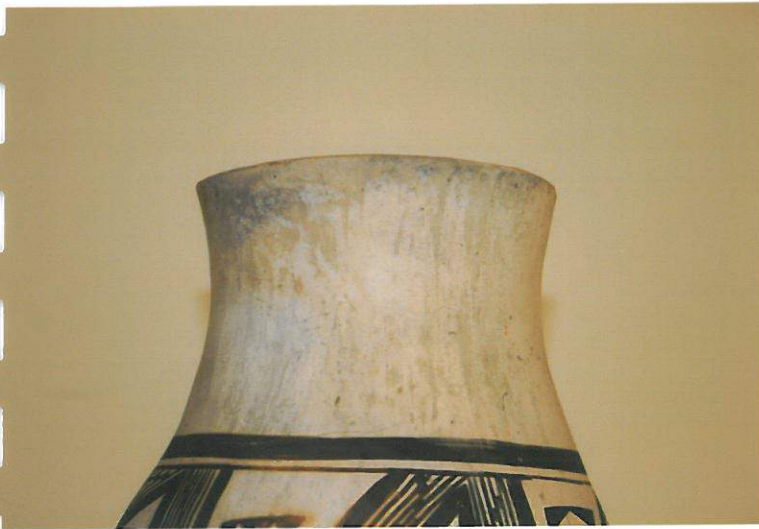


Item 10 Hopi vase

18

WPL





Item 10 close up



Item 10 designs



Item 10 red clay inside



Item 10- bottom

3/21/11

19

WPL





Item 11 Hopi canteen



Item 11 front designs



Item 11 side view



Item 11 back view

3/21/11

20

WPL





Item 11 top view



Item 11 cloth straps



Item 11 firing clouds



Item 12 front view

3/21/11

21

WPL





Item 12 calcium bottom



Item 12 lip view



Item 12 bototm, calcium



Item 12 designs

3/21/11

22

WPL





Item 12 cracked lip



Item 13 Hopi cup



Item 13 inside brown band



Item 13 center crack

3/21/11

23

WPL





Item 13 brown line designs



Item 13 handle



Item 14 Hopi bowl



Item 14 inside

3/21/11

24

WPL





Item 14 back



Item 14 design



Item 14 crack



Item 15 Hopi cup

3/21/11

25

WPL





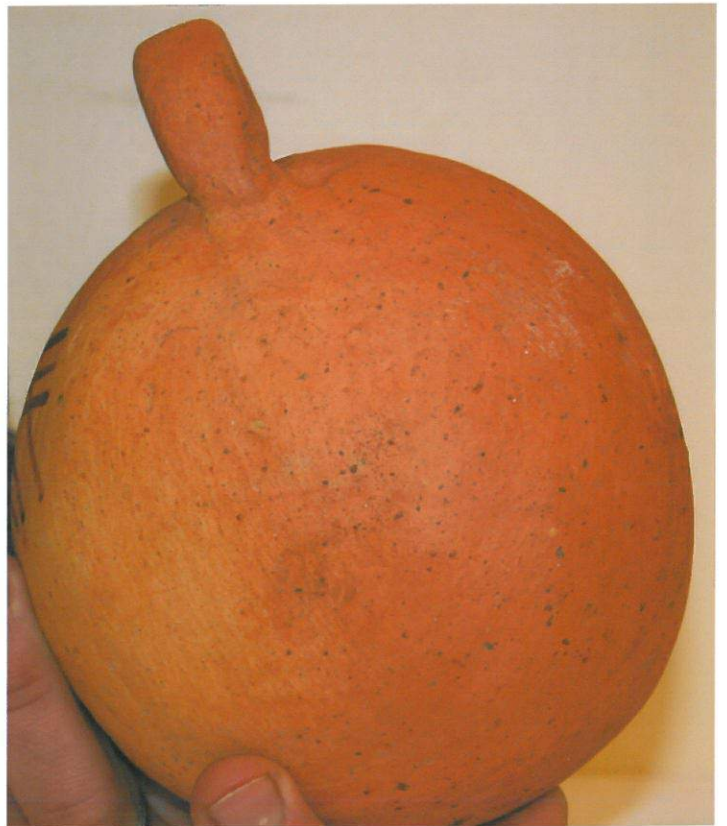
Item 15 Hopi cup



Item 15 chipped lip



Item 15 inside view



Item 15 back

3/21/11

26

WPL





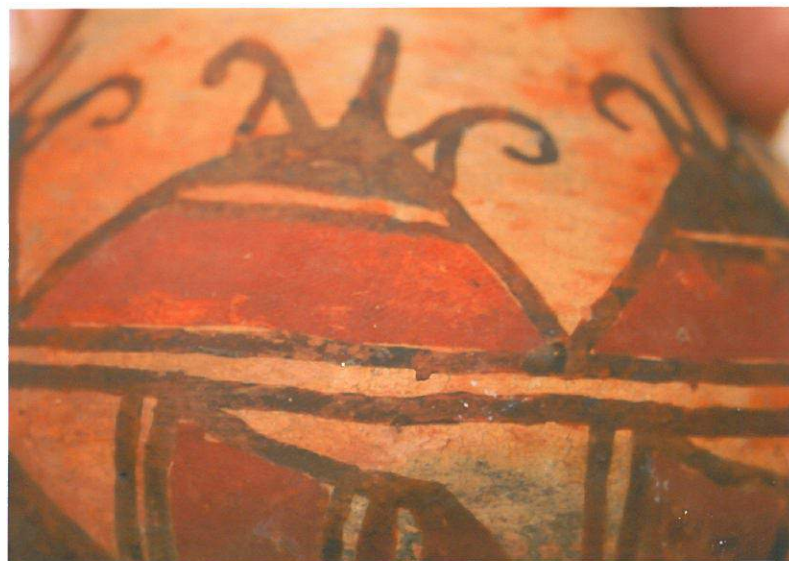
Item 16 Hopi vase



Item 16 inside view



Item 16 back



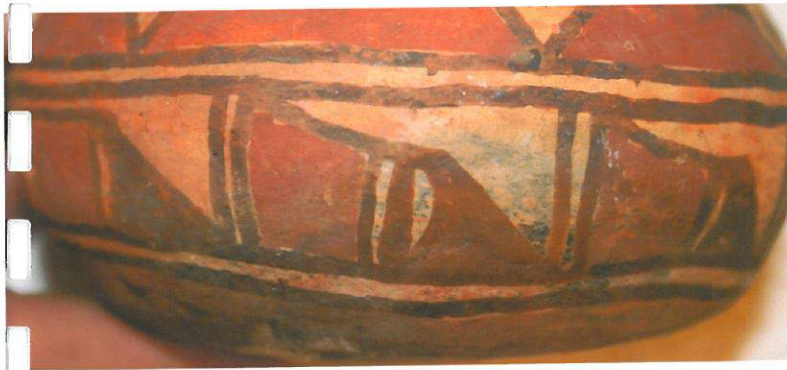
Item 16 design

3/21/11

27

WPL





Item 16 design



Item 17 Hopi bowl



Item 17 side view



Item 17 inside

3/21/11

28

WPL





Item 17 back, slip removed



Item 18 Hopi bowl



Item 18 bird designs

29



Item 18 faded area

WPL

3/21/11





Item 18 inside



Item 18 bottom



Item 18 side view



Item 19 dish

3/21/11

30

WPL





Item 19 inside



Item 19 bottom



Item 19

3/21/11

31



Item 20 Hopi cup

WPL





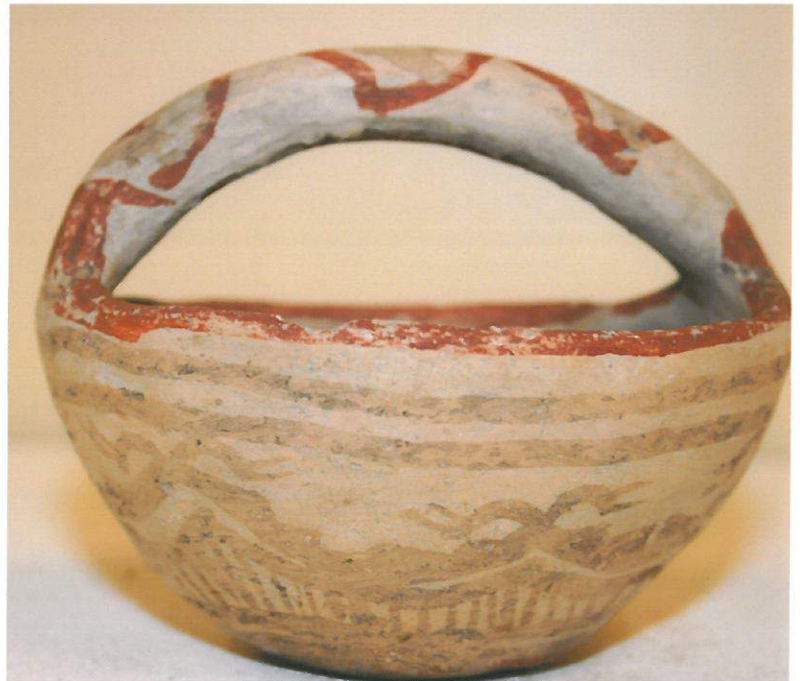
Item 20 inside design



Item 20 back



Item 20 side view



Item 21 Hopi friendship basket

3/21/11

32

WPL





Item 21 inside view



Item 21 bottom



Item 21 side view



Item 21 designs

3/21/11





Item 21 designs



Item 21 inside view

3/21/11

34

WPL





Item 22 Hopi Prayer Sticks



Item 22 closeup



Item 22 closeup



Item 22 back side

3/21/11

35

WPL





Item 22 back bundle



Item 22 side view



Item 23 Prayer stickes



figure

3/21/11

36

WPL





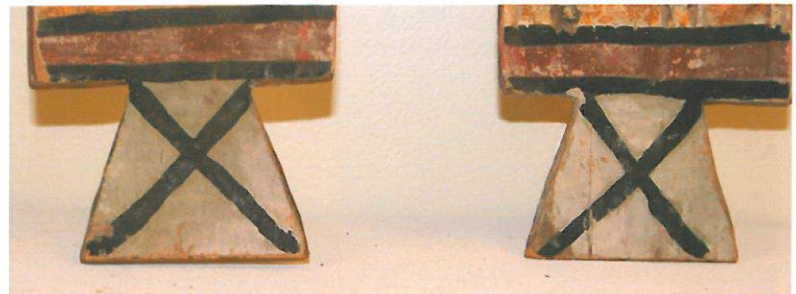
Item 23 closeup



Item 23 back



Item 23 side



Item 23 handles

3/21/11

37

WPL

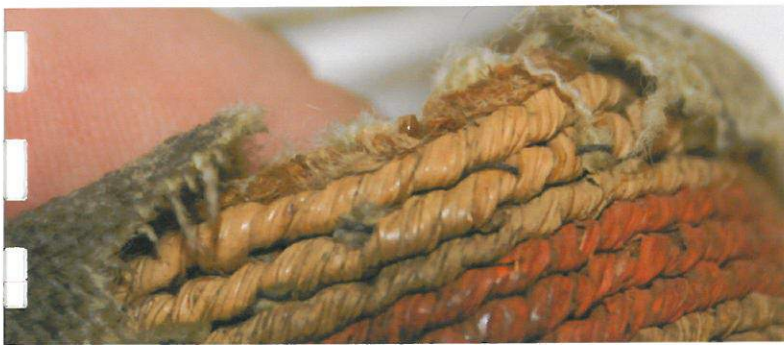




Item 24 Corn Husk bag



Item 24 lip of bag



Item 24 repairs



Item 24 twinned stitches

3/21/11

38

WPL





Item 24 bottom



Item 25 Weaving sampler



Item 25 stick loom



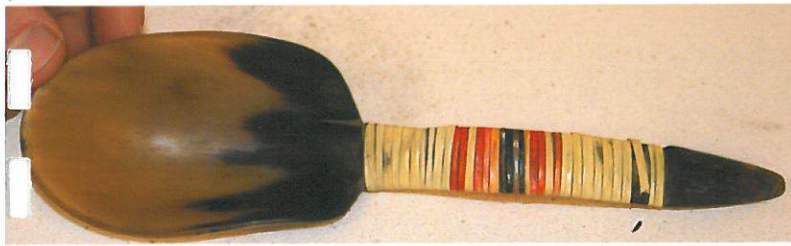
Item 25 Weft and warp

3/21/11

39

WPL





Item 26 Apache Horn spoon



Item 26 horn closeup



Item 26 porcupine handle



Item 26 tip of handle

3/21/11

40

WPL





Item 27 Apache T necklace



Item 27 closeup



Item 27 cloeup



Item 27 backing

3/21/11

41

WPL





Item 28 Apache pouch



Item 28 back



Item 28 belt loop



Item 28 opening

3/21/11

42

WPL





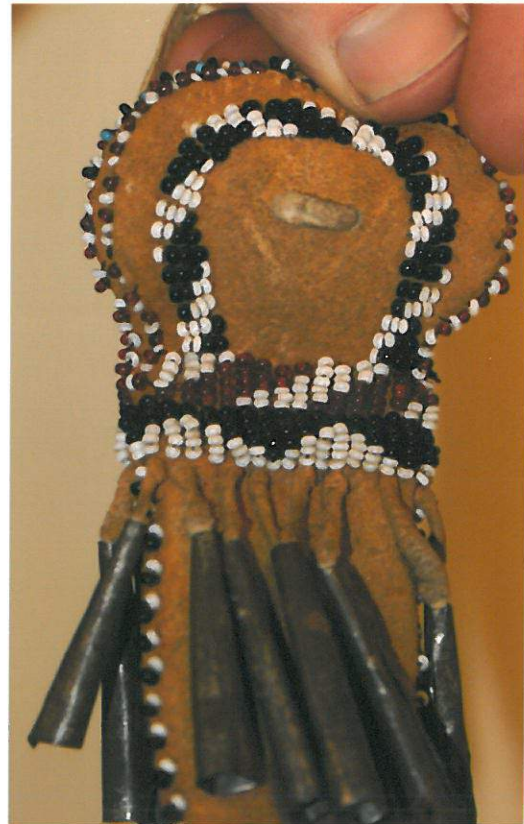
Item 28 beadwork design



Item 29 Apache awl case



Item 29 tool opening



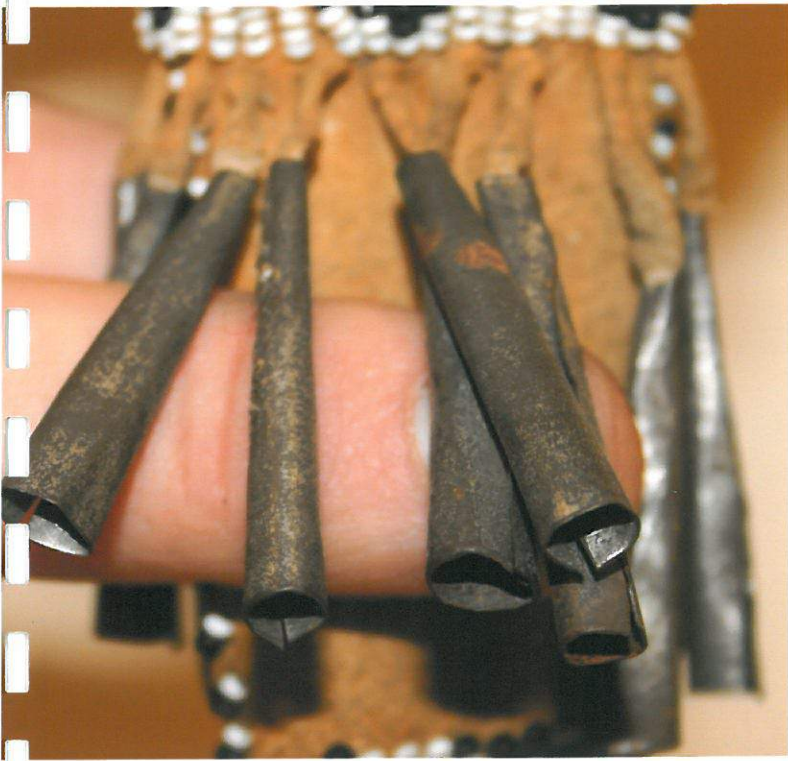
Item 29 back

3/21/11

43

WPL





Item 29 tin cones



Item 29 beadwork



Item 29 bottom



Item 29 beadwork

3/21/11

44

WPL





Item 31 hairpiece or arm band



Item 31 back side



Item 31 closeup



Item 31 side view

3/21/11

46

WPL





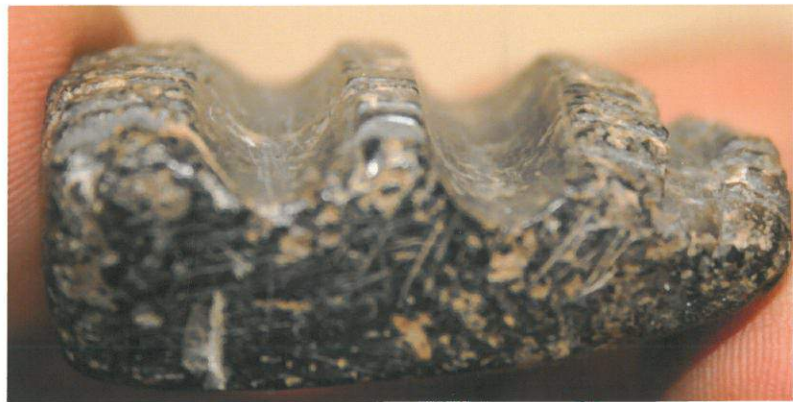
Item 30 arrow straightner bag



Item 30 leather bag



Item 30 stone arrow straightner



Item 30 side view

3/21/11

45

WPL

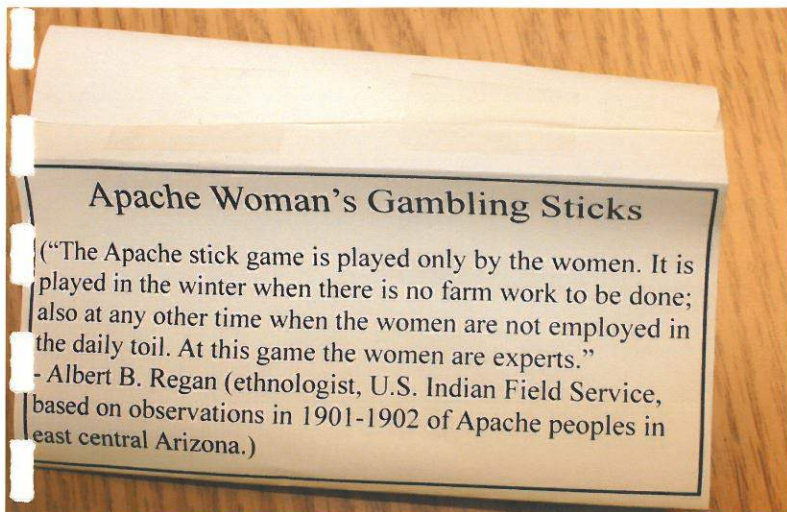




Item 31 half section



Item 31 other half section



Item 32

3/21/11

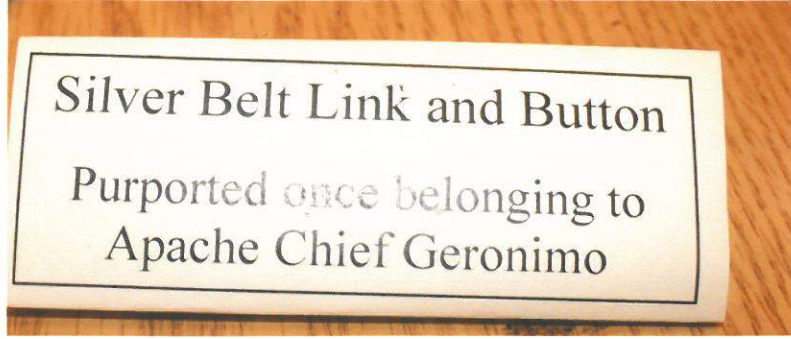
47



Item 32 Apache women gambling sticks

WPL





Item 32 back side

Item 33



Item 33 Phase I, Navajo concho

Item 33 center

3/21/11

48

WPL





Item 33 edging



Item 34 Mocassin button



Item 34 back

3/21/11

49

WPL



Native American "dolls"

Unlike the other items in this display, we believe that these "dolls" were made for the tourist trade. The heads are painted plastic, the material is printed felt and feathers are dyed. The bodies are stuffed with straw and the legs are wood frames wrapped in newspaper. It is from the newspaper that we are dating these items from circa. 1956.



item 35

Item 35 man doll



Item 35 back view



Item 35 side view

3/21/11

50

WPL





Item 35 face



Item 35 back of headdress



Item 35 face feaures



Item 35 moccasins

3/21/11

51

WPL





Item 35 body structure



Item 35 newspaper inside



Item 35 no hands

3/21/11



Item 36 Woman doll

52

WPL





Item 36 back view



Item 36 baby on back



Item 36 baby doll



Item 36 baby body structure

3/21/11

53

WPL





Item 36 baby face



Item 36 black hair



Item 36 back view baby



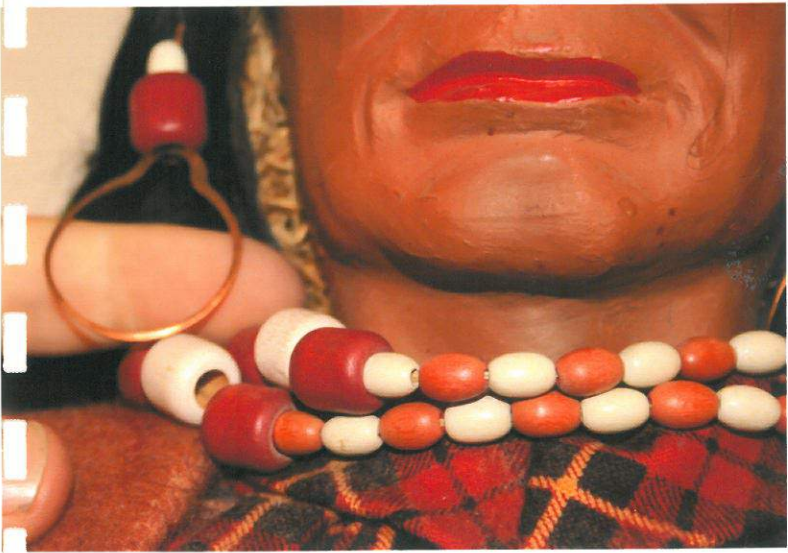
Item 36 woman face

3/21/11

54

WPL





Item 36 earrings & necklace



Item 36 hair ties



Item 36 rope belt



Item 36 body structure

3/21/11

55

WPL





Item 36 leggings



Item 36 headband & feather

Hopi Rabbit Sticks (Throwing Sticks)

Native people of the Southwest (as well as Aboriginal peoples of Australia and the ancient Egyptians among others) used these tools and other like them to hunt small game such as rabbits, prairie dogs, birds and even against animals as large as coyotes.



Item 37

Item 37 hand grips

3/21/11

56

WPL





Item 37 wood

Item 37 wood



3/21/11

Item 37

57

Item 37 designs

WPL





Item 38 Hopi hair loop



Item 38 designs



Item 39 Hopi dancer arm bands



Item 39 back view

3/21/11

58

WPL

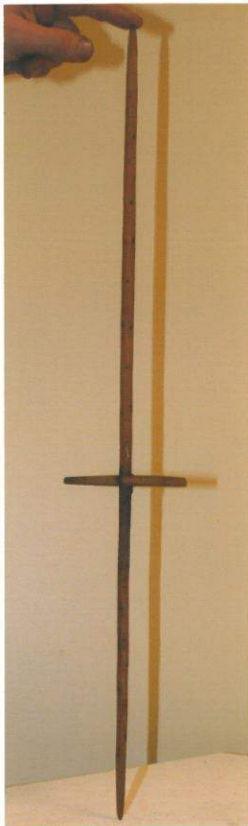




Item 39 open view



Item 39 side view



Item 40 Spindle stick &



Item 40 closeup

3/21/11

59

WPL





Item 40 top of stick



Item 40 botton

Fly Chaser  
(with Hudson Bay  
beads - from Nothwest  
United States)



Item 41

Item 41

3/21/11

60

WPL





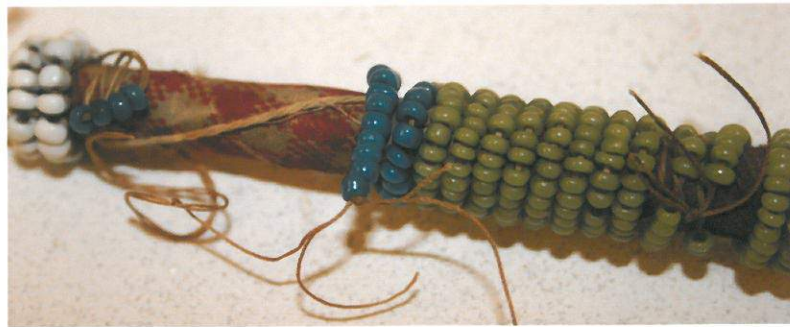
Item 41 beads



Item 41 fibers



Item 41 shells



Item 41 cloth closeup

3/21/11

Cel

WPL



Katcina Rattles.  
 (Turtle shell & antelope horns.)  
 Hopi-



Item 42

Item 42

303

### Skookum Indians

Skookum Indian Doll: Composition character face, black mohair wig; Indian blanket folded to represent arms; cotton print dress or shirt and felt trousers, headband with feathers; beads; suede boots, all very colorful, excellent unplayed-with condition.

Mattar	\$20-\$30
6in (15cm)	\$35-\$45
9-10in (23-25cm)	\$100-\$150
12in (31cm)	\$200-\$250
16in (41cm)	\$400-\$450
20in (51cm)	\$650-\$750
36in (91cm)	\$1,200-\$1,500

**FACTS**

Created and designed by Mary McAbey, Missoula, MT and Denver, CO. Dolls made by various companies including Arrow Novelty Co., New York and H.H. Tammen Co., New York, Denver and Los Angeles, 1913 on.

**Mark:** Sometimes a paper label on the sole of the foot.

**Trademark:** Skookum (Bully Good)

16in (41cm) Skookum  
 Ypau, with papoose,  
 all original. H.A.J.  
 Louke, Inc.

Item 35

3/21/11

62

WPL





Item 42



Item 42



Item 42 Hopi turtle shells- katsina dances

3/21/11

63



Item 42 close up

WPL





Item 42 close up



Item 42 hoofs



Item 42 cloth

3/21/11

64



Item 43 Hopi Gourd Rattle

WPL





Item 43 side view



Item 43 top view



Item 43 attachments



Item 43 String hand holder

3/21/11

65

WPL





Item 44 Hopi Gourd Rattle



Item 44 back side



Item 44 side view



Item 44 top view

3/21/11

66

WPL





Item 44 handle



Item 45 Hopi dance moccasins



Item 45, ankle leggings



45 side view

3/21/11

67

WPL





45 bottom view



45 top view



Item 46 Arrowhead



Item 46 back view

3/21/11

68

WPL





Item 47 Pipe stone pipe



Item 47 top view



Item 47 side view



Item 47 bottom view

3/21/11

69

WPL





Item 48



Item 48



Item 48 end view

3/21/11



Item 48 String

70

WPL





### 2-Stringed Fiddle (origin unknown)

This instrument is made with a turtle shell body covered with skin (deer or goat). It is similar to some versions of the rebab which spread from the Middle East west to as far as Spain and east to Java. It is also similar to the Chinese 2-stringed fiddle (erhu). Such instruments can be plucked, but are often bowed.

Item 48 holes

Item 49



Item 49 back view

Item 49 side view

3/21/11

71

WPL





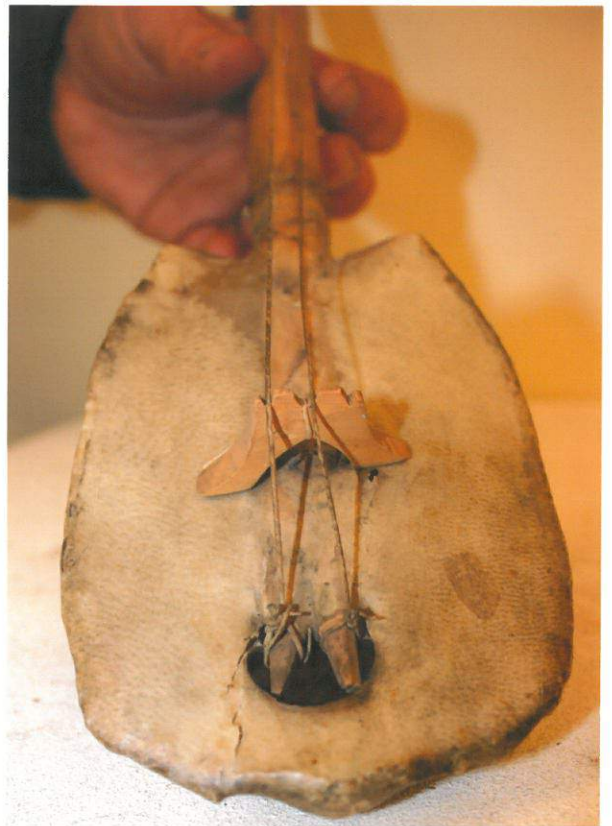
Item 49 front view of shell



Item 49 pegs



Item 49 pegs



Item 49 strings

3/21/11

72

WPL





Item 49 leather



Item 49 closeup



Item 50 Hopi Katsina

3/21/11

73



Item 50 side view

WPL





Item 50 back view



Item 50 top view



Item 50 Item closeup



Item 50 face mask

3/21/11

74

WPL





Item 50 arms & body



Item 50 legs



Item 50 feet

**Hopi Katchina Dolls**

Katchinas are “spirits” within Hopi cosmology and can be the spiritual embodiment of a variety of things from revered ancestors to specific animals (e.g. “Mountain Lion”, “Hummingbird”) to a mythological being (e.g. ‘Cha’kwaina’ or “The One Who Cries”). Katchina “dolls” are more properly understood as icons.)

3/21/11

75

Item 50 & 51

WPL



This Hopi katchina doll has a type of head dress called a "tablita". Katchina dancers also sometimes wear similar tablitas.



Item 51

Item 51



Item 51

3/21/11



Item 51

76

WPL

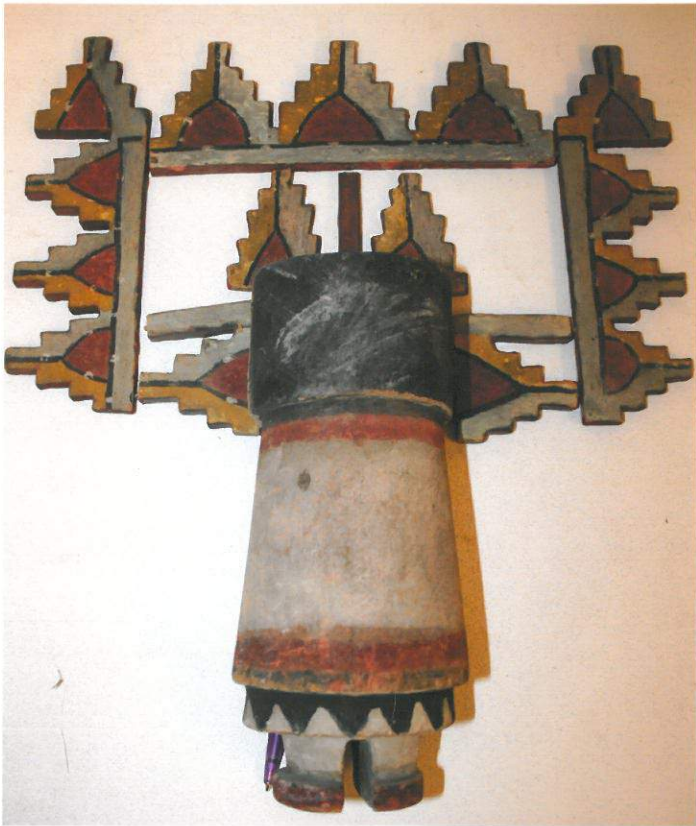




Item 51



Item 51 bottom view



Item 51 back view



Item 51 closeup

3/21/11

77

WPL





Item 51 no tablita



Item 52 Hopi shoe wraps



Item 52 back side



Item 52 leather ties

3/21/11

78

WPL





Item 52 black designs



Item 52



Item 52



Item 53

3/21/11

79

WPL



Apache women in front  
trading post. Whiterin  
Agency, Arizona.



Item 53 back note

Item 54

Navajo Woman shearing sheep  
in corral  
Arizona



Item 54 note

Item 55

3/21/11

80

WPL



Hopi Mother & child.  
Arizona



Item 55

Item 56

Apache woman carrying  
child in cradle on her  
back.  
Arizona



Item 56

Item 57

3/21/11

81

WPL



Navajo Hogan or house  
Draibi Wash, Arizona



Item 57

Item 58

Kiohnu, famous Hopi  
Spring, home of the Katchinas  
60 mi north of Draibi.  
Arizona



3/21/11

Item 58

82

Item 59

WPL



Scene on trail White Mt  
Apache Reservation A.T.



Item 59

Item 60

Miki Apache policeman  
with his family on his  
farm East Fork White in  
Arizona



3/21/11

Item 60

83

Item 61

WPL



Navajo woman lounging  
on the ground.  
Arizona



Item 61 notes

Item 62

Ancient Hopi Ruin 60 miles  
from Oraibi  
Arizona



3/21/11

Item 62 notes

84

Item 63

WPL



Entrance into Cliff  
dwelling East Fork White river  
Arizona

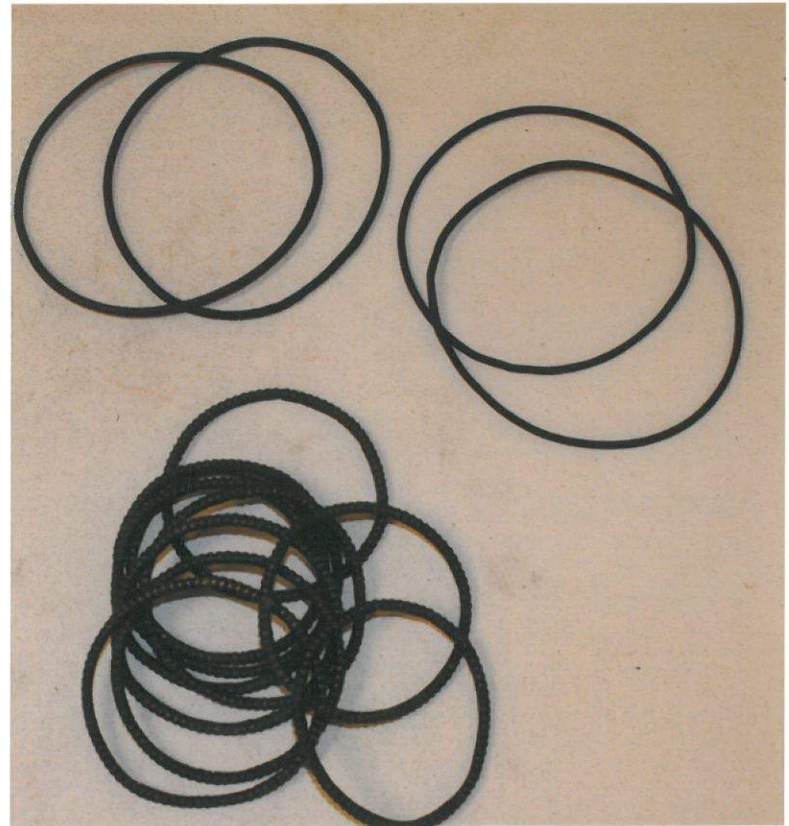
Item 63 notes



Item 64

Hopi shrine at end of  
Mesa below Oraibi  
Arizona

Item 64 notes



Item 65

3/21/11

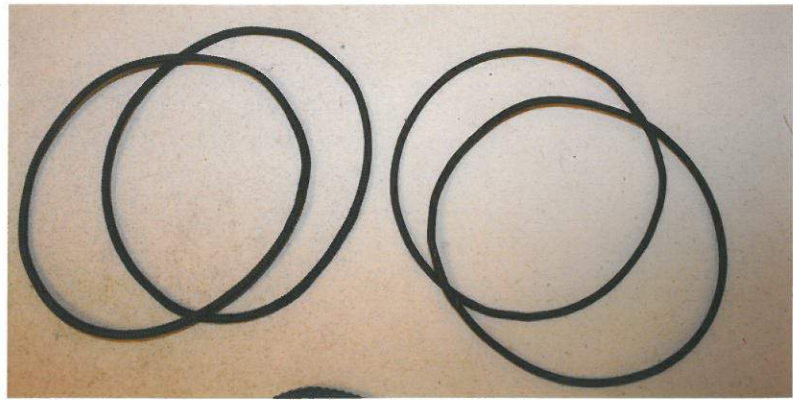
85

WPL





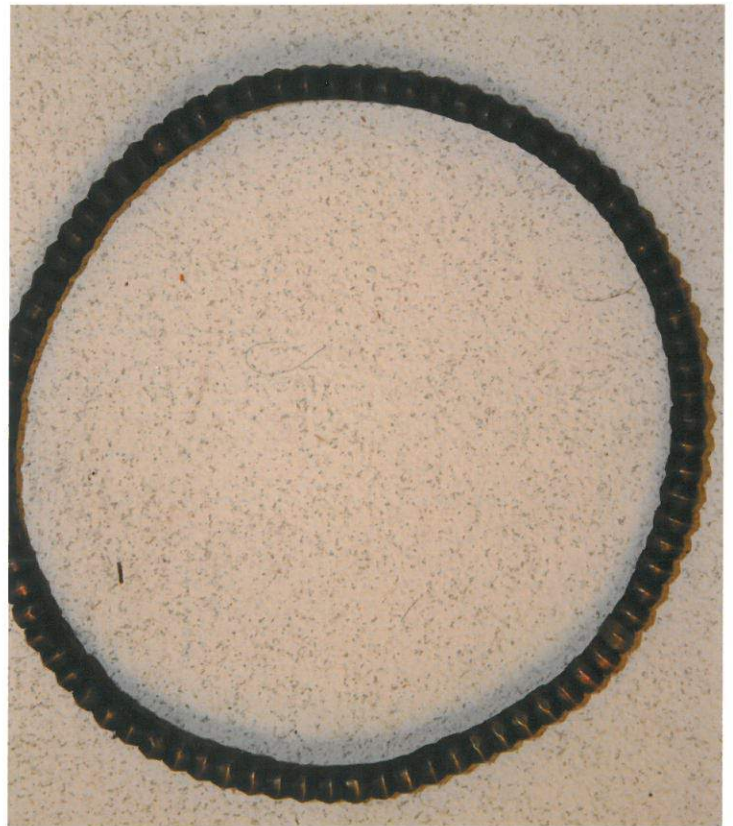
Item 65



Item 65



Item 65



Item 66

3/21/11

86

WPL





Item 67



Item 67



Item 67



Item 67

3/21/11

87

WPL





Item 67



Item 67



Item 67

88

3/21/11

WPL